

Detecting Diabetes

American Diabetes Association Diabetes Risk Assessment with Blood Glucose Testing Protocol

All diabetes risk assessments should start with the paper risk test.

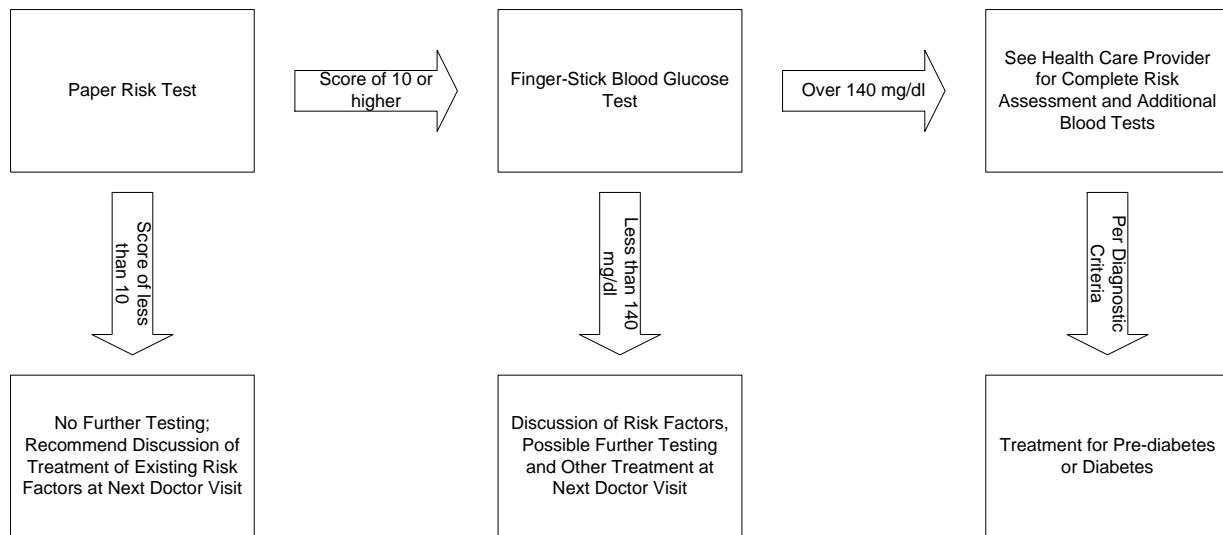
Paper Risk Test Score less than 10: Do not test blood glucose. Recommend that the employee discuss existing risk factors with their health care provider at their next visit.

Paper Risk Test Score of 10 or higher: May do a random blood glucose test.

Finger-Stick Blood Glucose Test Result is less than 140 mg/dL: Recommend that the employee discuss risk factors and possible further testing at their next health care provider visit.

Finger-Stick Blood Glucose Test Result of 140 mg/dL or higher: Recommend that the employee see his/her health care provider as soon as possible for a complete risk assessment including additional blood tests.

The process is summarized in the following flowchart:



July 2005